

GreenGirt Max CMH™

GreenGirt.com

(269) 355-1818

SUBSTRATE: MASONRY

CLADDING: —

GREENGIRT SIZE: 2"

INSULATION: MINERAL WOOL

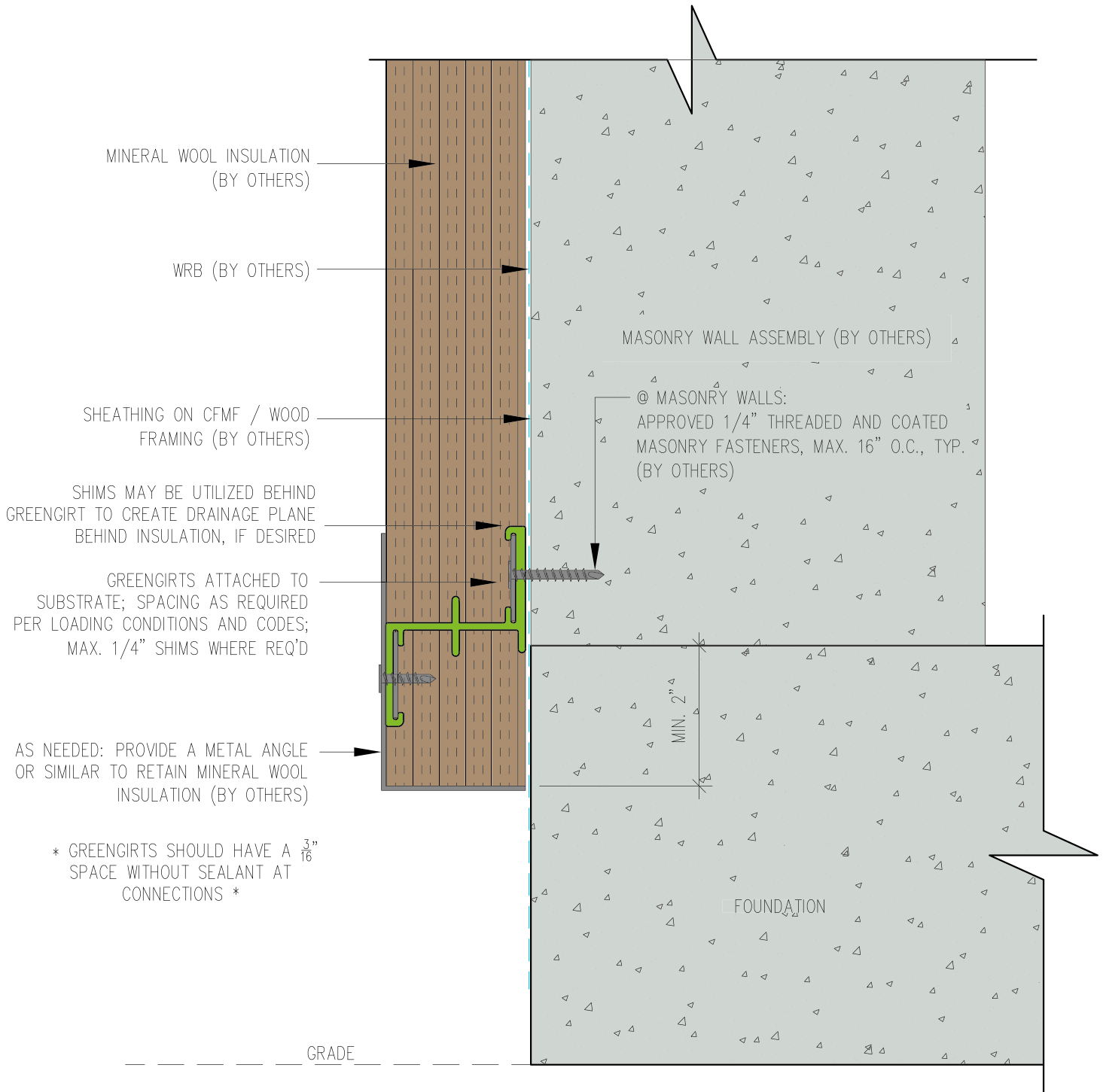
DATE:

GIRT ORIENTATION: HORIZONTAL

BASE AT ROOF

NOT TO SCALE

GG10



GreenGirt Max CMH™

GreenGirt.com

(269) 355-1818

SUBSTRATE: MASONRY

CLADDING: —

GREENGIRT SIZE: 2"

INSULATION: MINERAL WOOL

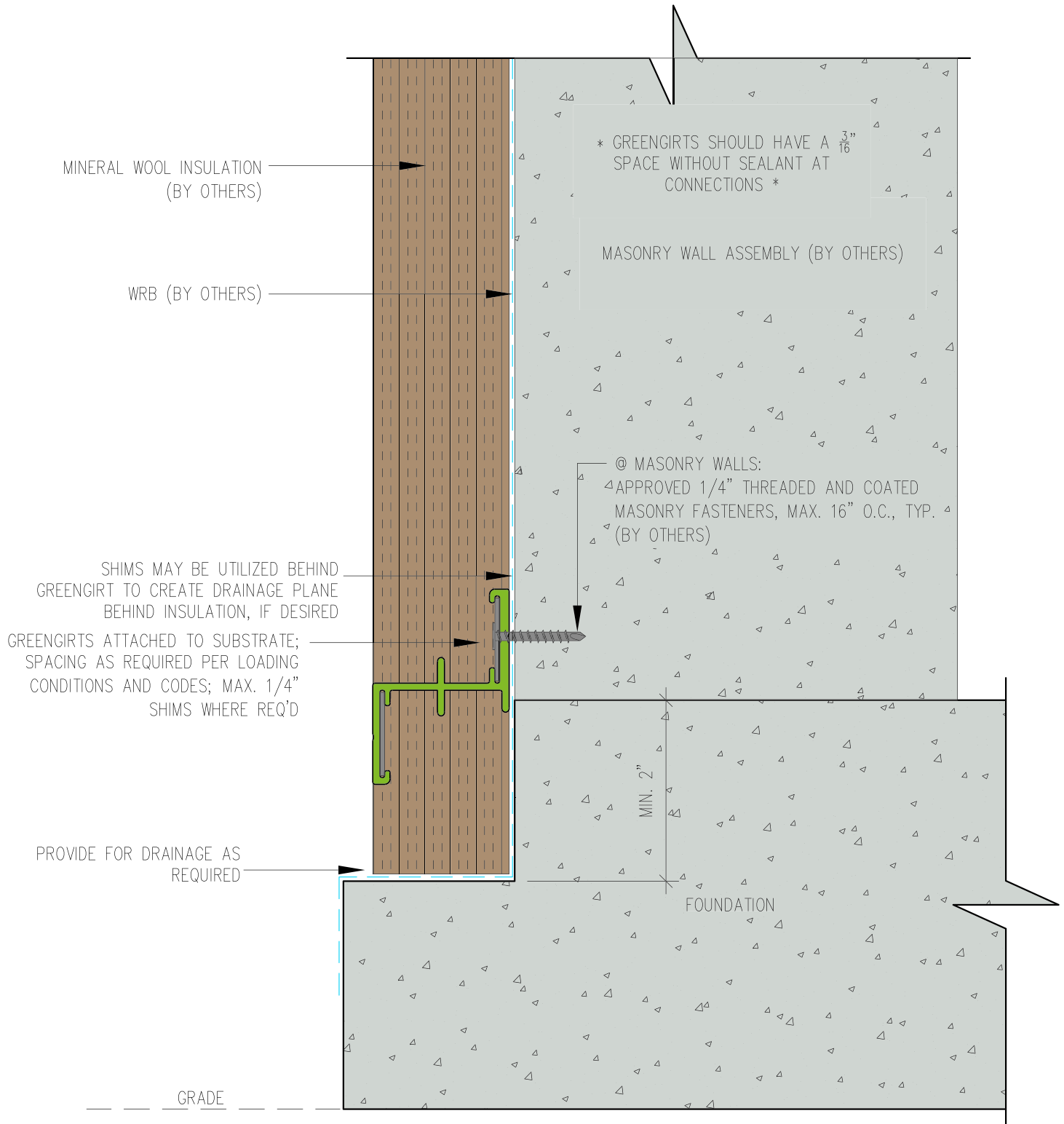
DATE:

GIRT ORIENTATION: HORIZONTAL

FOUNDATION FLUSH DETAIL

NOT TO SCALE

GG4



GreenGirt Max CMH™

GreenGirt.com

(269) 355-1818

SUBSTRATE: MASONRY

CLADDING: —

GREENGIRT SIZE: 2"

INSULATION: MINERAL WOOL

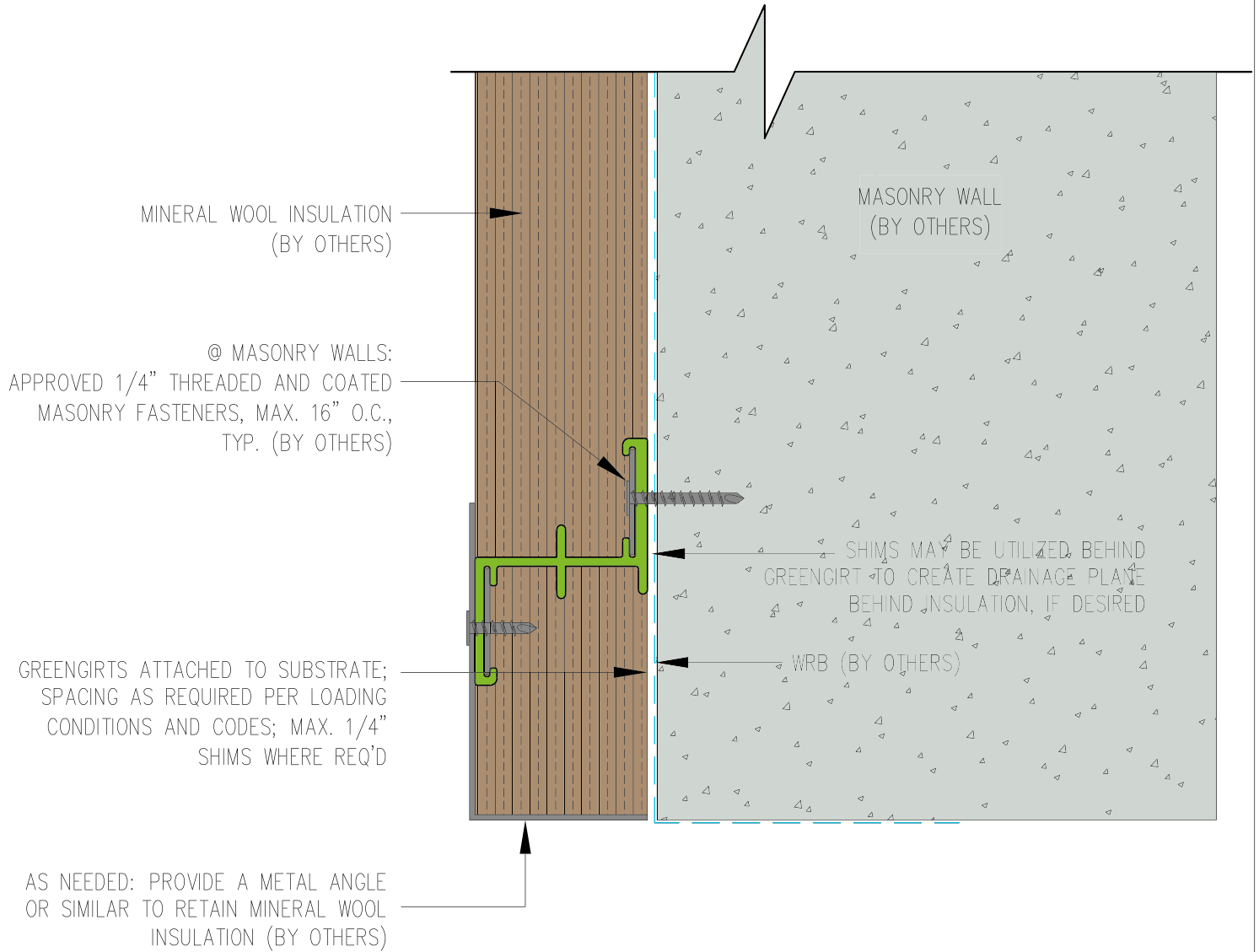
DATE:

GIRT ORIENTATION: HORIZONTAL

FOUNDATION NOTCH DETAIL

NOT TO SCALE

GG3



GreenGirt Max CMH™

GreenGirt.com

(269) 355-1818

SUBSTRATE: MASONRY

CLADDING: —

GREENGIRT SIZE: 2"

INSULATION: MINERAL WOOL

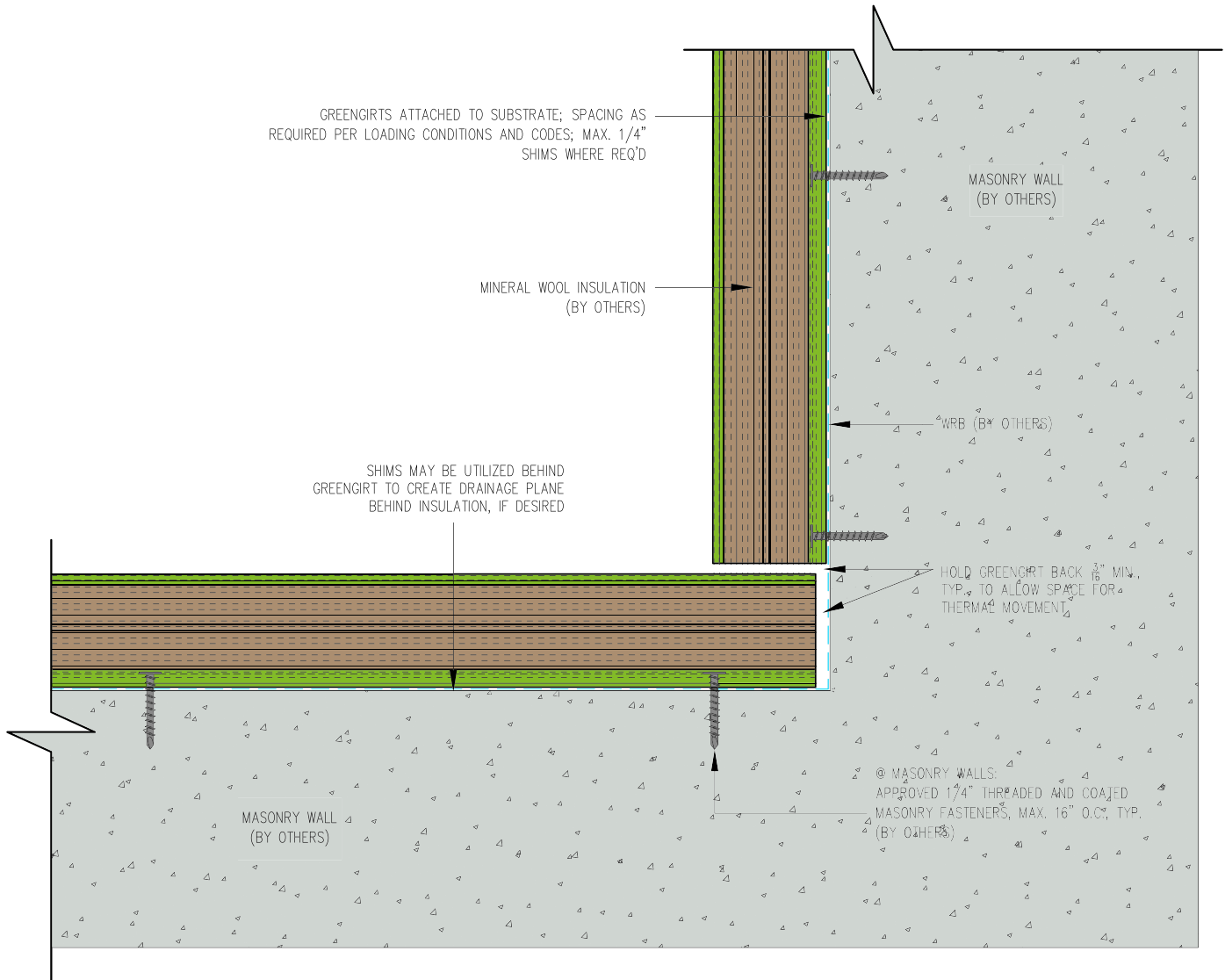
DATE:

GIRT ORIENTATION: HORIZONTAL

HEADER DETAIL

NOT TO SCALE

GG7



GreenGirt Max CMH™

GreenGirt.com

(269) 355-1818

SUBSTRATE: MASONRY

CLADDING: —

GREENGIRT SIZE: 2"

INSULATION: MINERAL WOOL

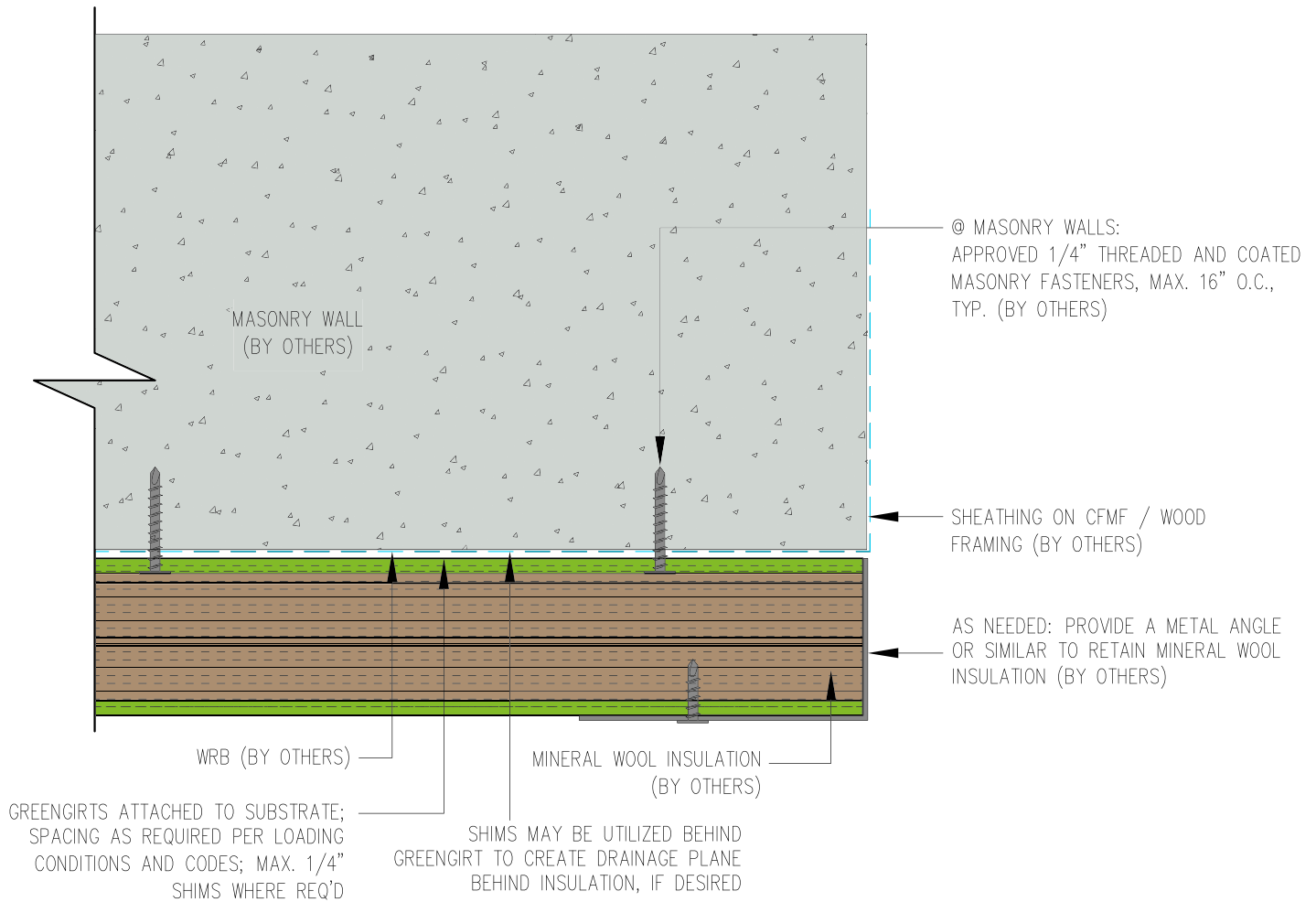
DATE:

GIRT ORIENTATION: HORIZONTAL

INSIDE CORNER DETAIL

NOT TO SCALE

GG5



GreenGirt Max CMH™

GreenGirt.com

(269) 355-1818

SUBSTRATE: MASONRY

CLADDING: —

GREENGIRT SIZE: 2"

INSULATION: MINERAL WOOL

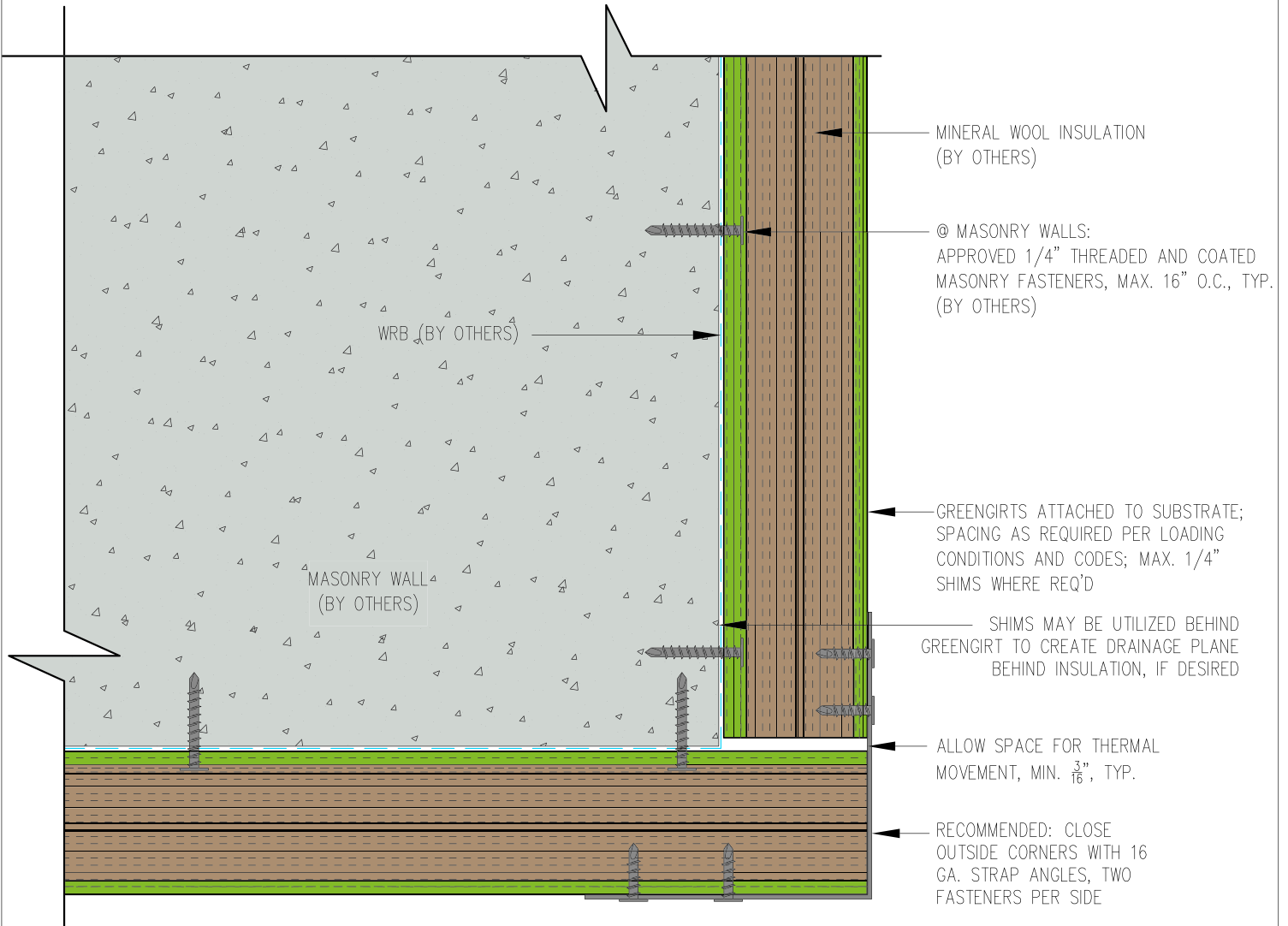
DATE:

GIRT ORIENTATION: HORIZONTAL

JAMB DETAIL

NOT TO SCALE

GG8



GreenGirt Max CMH™

GreenGirt.com

(269) 355-1818

SUBSTRATE: MASONRY

CLADDING: —

GREENGIRT SIZE: 2"

INSULATION: MINERAL WOOL

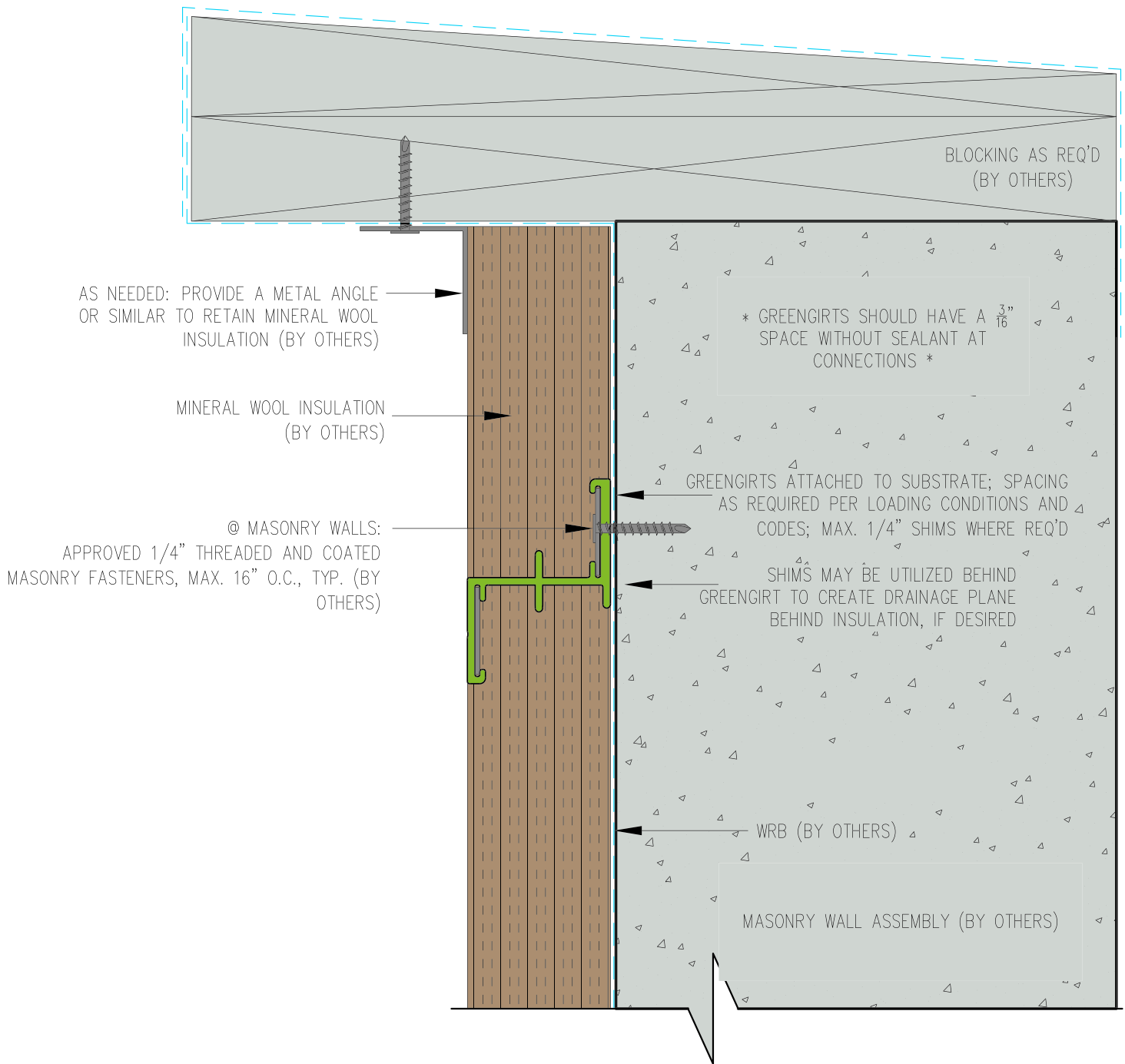
DATE:

GIRT ORIENTATION: HORIZONTAL

OUTSIDE CORNER DETAIL

NOT TO SCALE

GG6



GreenGirt Max CMH™

GreenGirt.com

(269) 355-1818

SUBSTRATE: MASONRY

CLADDING: -

GREENGIRT SIZE: 2"

INSULATION: MINERAL WOOL

DATE:

GIRT ORIENTATION: HORIZONTAL

PARAPET DETAIL

NOT TO SCALE

GG2



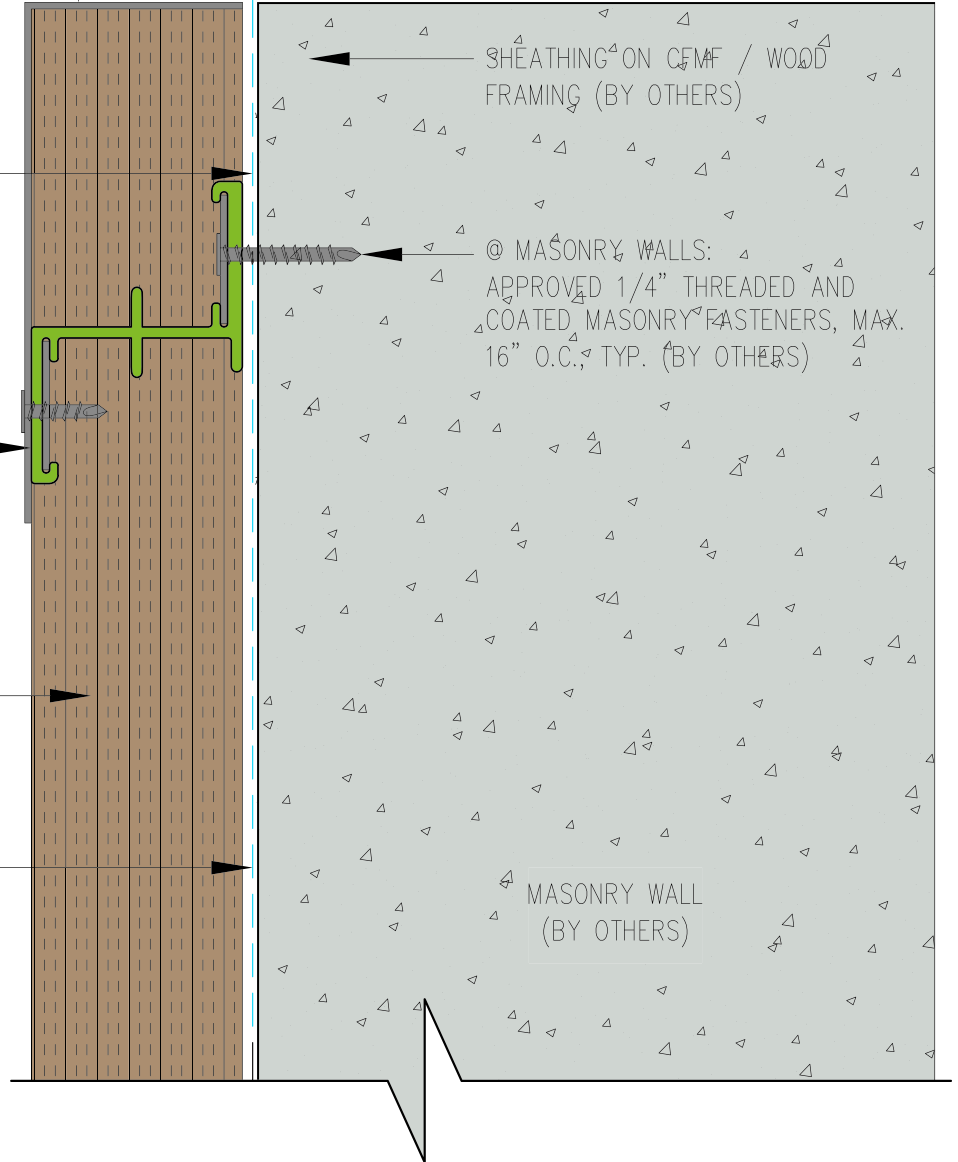
AS NEEDED: PROVIDE A METAL ANGLE
OR SIMILAR TO RETAIN MINERAL WOOL
INSULATION (BY OTHERS)

SHIMS MAY BE UTILIZED BEHIND
GREENGIRT TO CREATE DRAINAGE PLANE
BEHIND INSULATION, IF DESIRED

GREENGIRTS ATTACHED TO
SUBSTRATE; SPACING AS REQUIRED
PER LOADING CONDITIONS AND CODES;
MAX. 1/4" SHIMS WHERE REQ'D

MINERAL WOOL INSULATION
(BY OTHERS)

WRB (BY OTHERS)



GreenGirt Max CMH™

GreenGirt.com

(269) 355-1818

SUBSTRATE: MASONRY

CLADDING: —

GREENGIRT SIZE: 2"

INSULATION: MINERAL WOOL

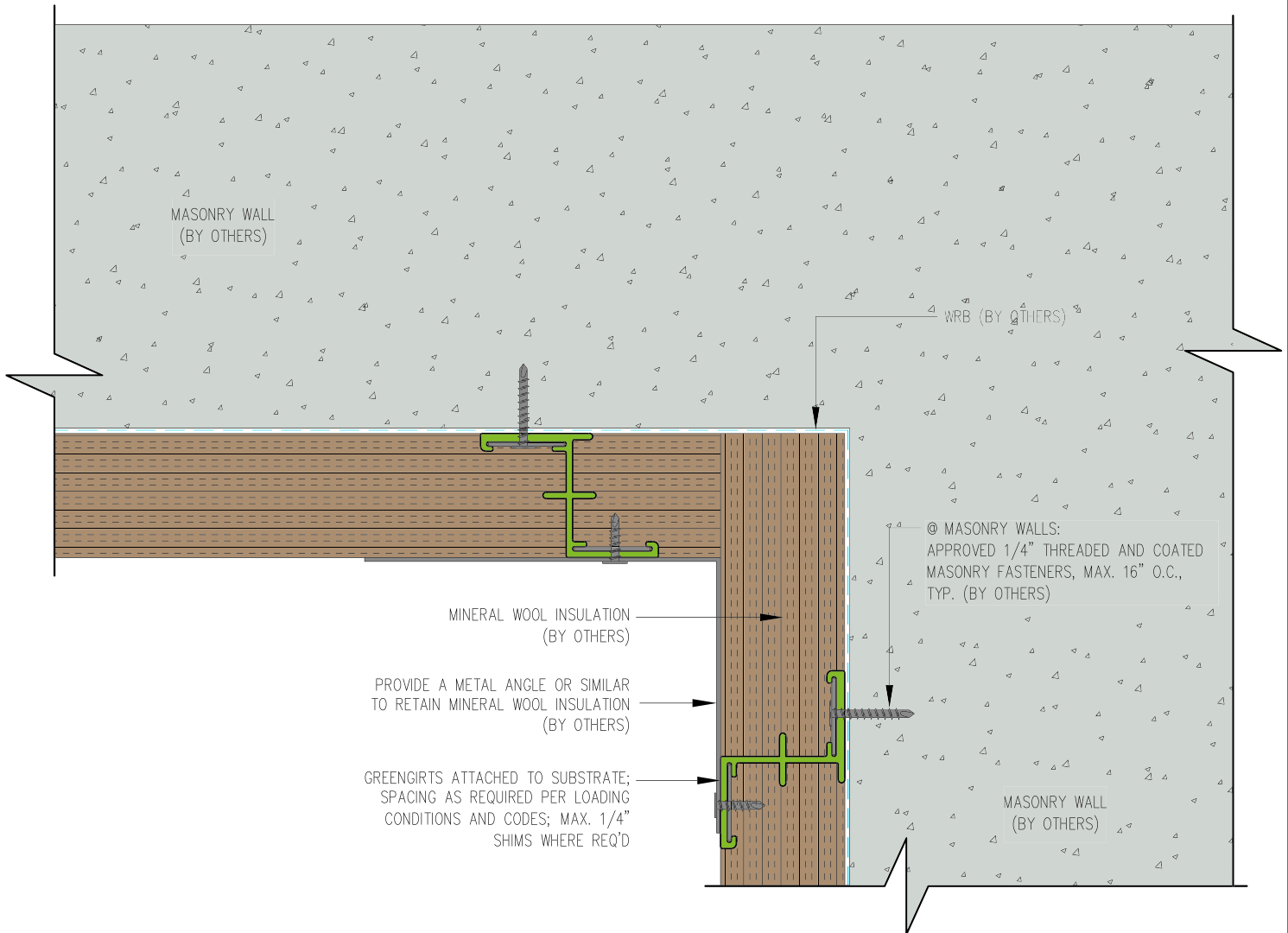
DATE:

GIRT ORIENTATION: HORIZONTAL

SILL DETAIL

NOT TO SCALE

GG9



GreenGirt Max CMH™

GreenGirt.com

(269) 355-1818

SUBSTRATE: MASONRY

CLADDING: —

GREENGIRT SIZE: 2"

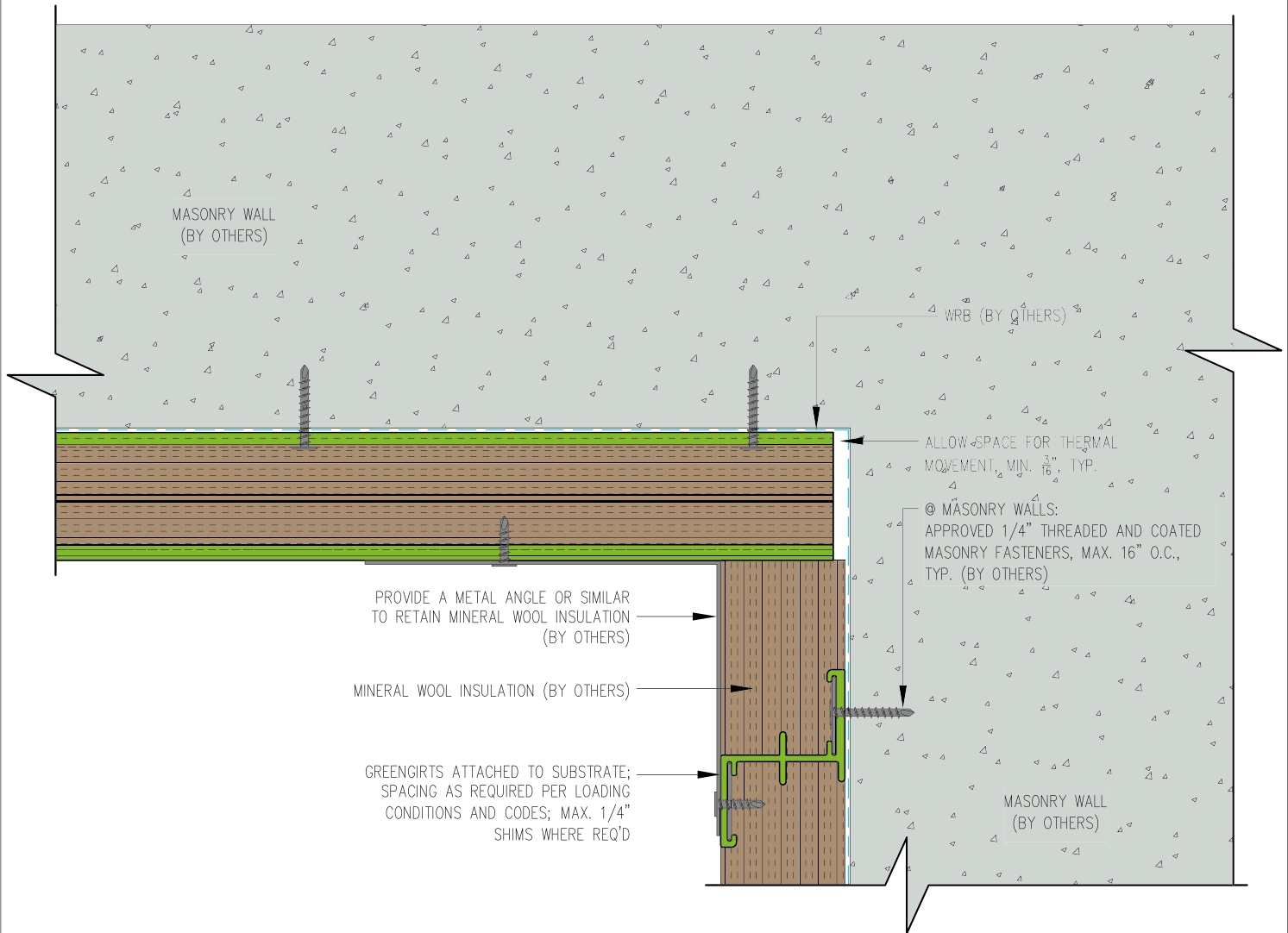
INSULATION: MINERAL WOOL

DATE:

GIRT ORIENTATION: HORIZONTAL

SOFFIT INSIDE DETAIL—1

NOT TO SCALE



GreenGirt Max CMH™

GreenGirt.com

(269) 355-1818

SUBSTRATE: MASONRY

CLADDING: —

GREENGIRT SIZE: 2"

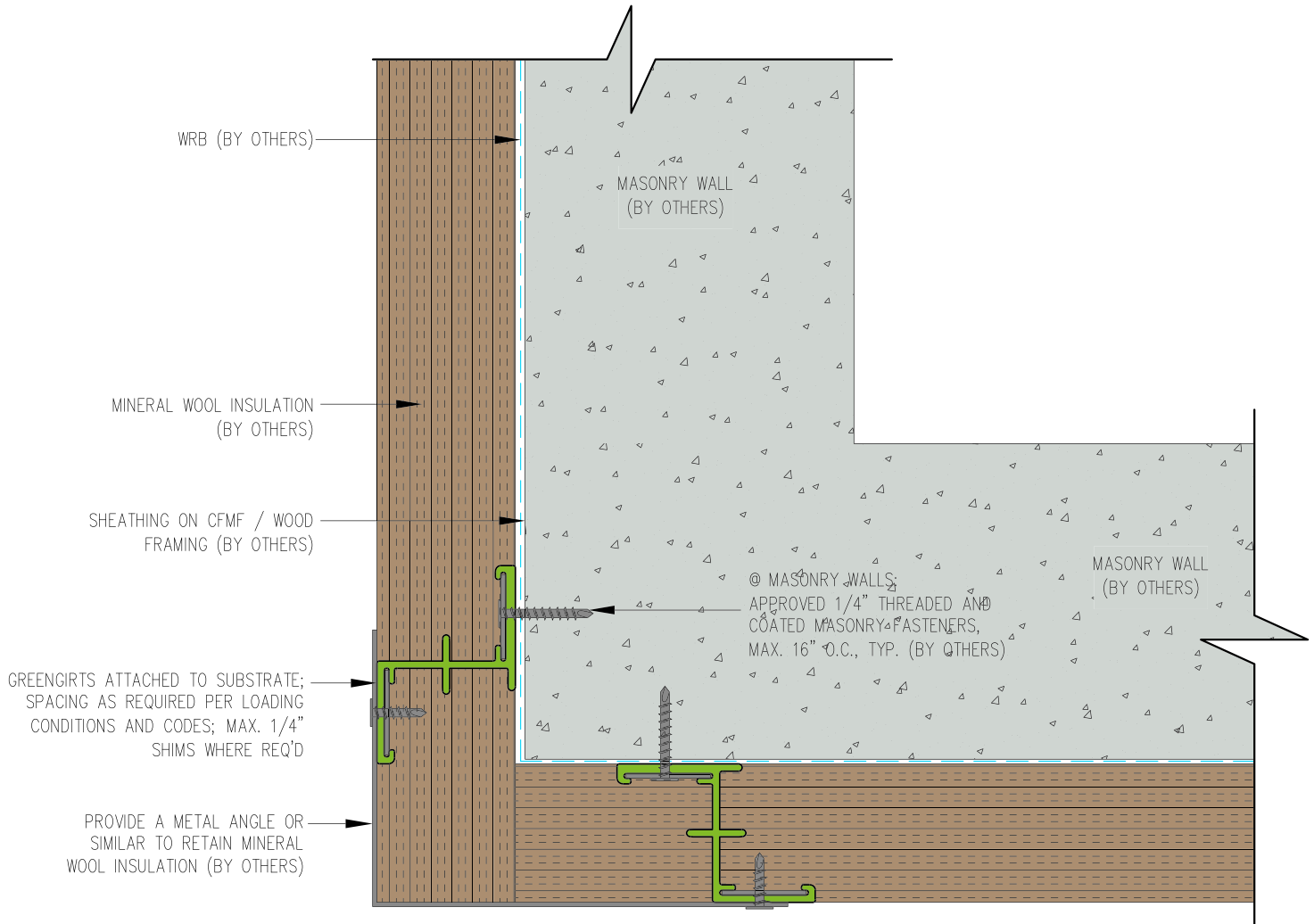
INSULATION: MINERAL WOOL

DATE:

GIRT ORIENTATION: HORIZONTAL

SOFFIT INSIDE DETAIL-2

NOT TO SCALE



GreenGirt Max CMH™

GreenGirt.com

(269) 355-1818

SUBSTRATE: MASONRY

CLADDING: -

GREENGIRT SIZE: 2"

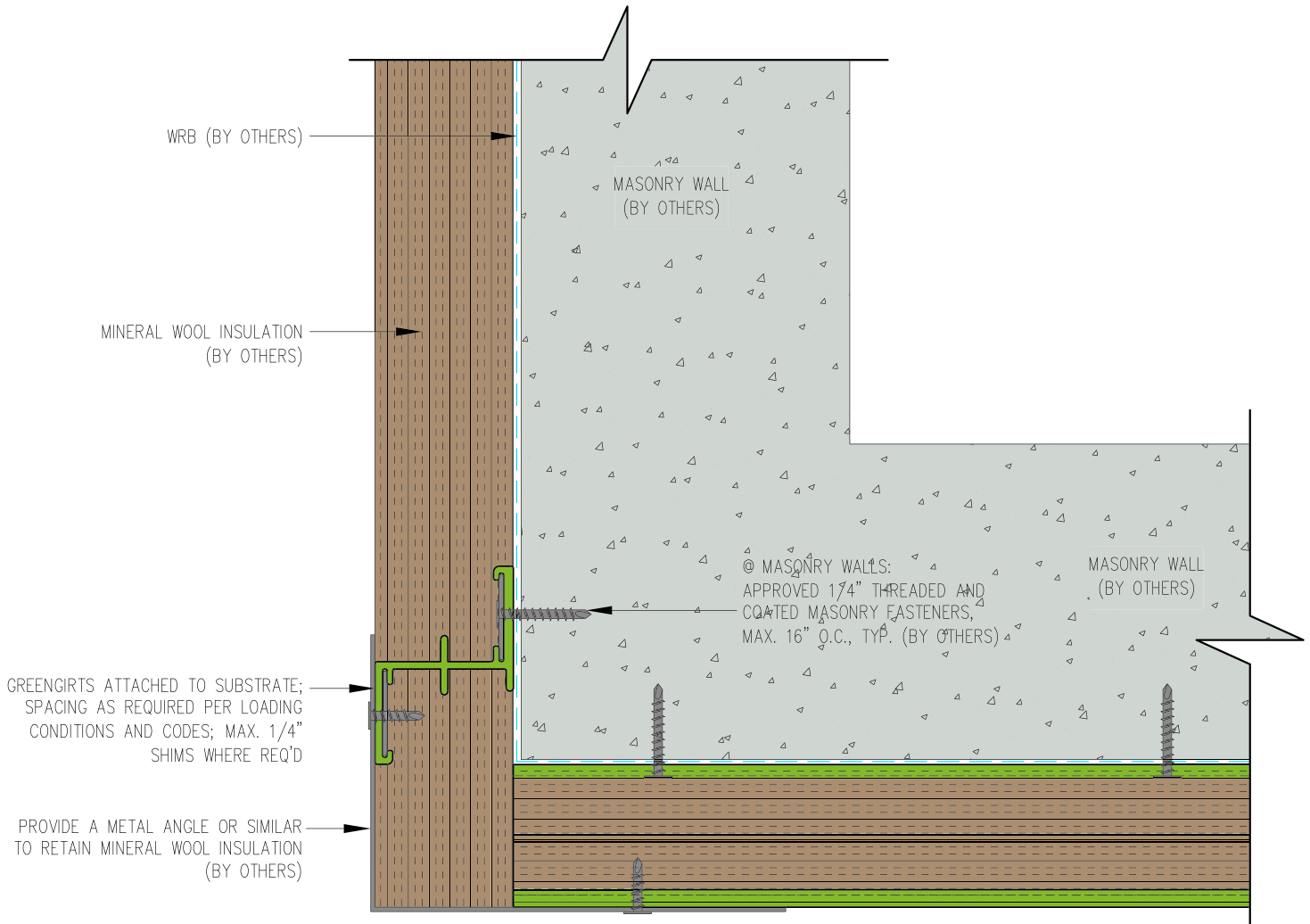
INSULATION: MINERAL WOOL

DATE:

GIRT ORIENTATION: HORIZONTAL

SOFFIT OUTSIDE DETAIL-1

NOT TO SCALE



GreenGirt Max CMH™

GreenGirt.com

(269) 355-1818

SUBSTRATE: MASONRY

CLADDING: —

GREENGIRT SIZE: 2"

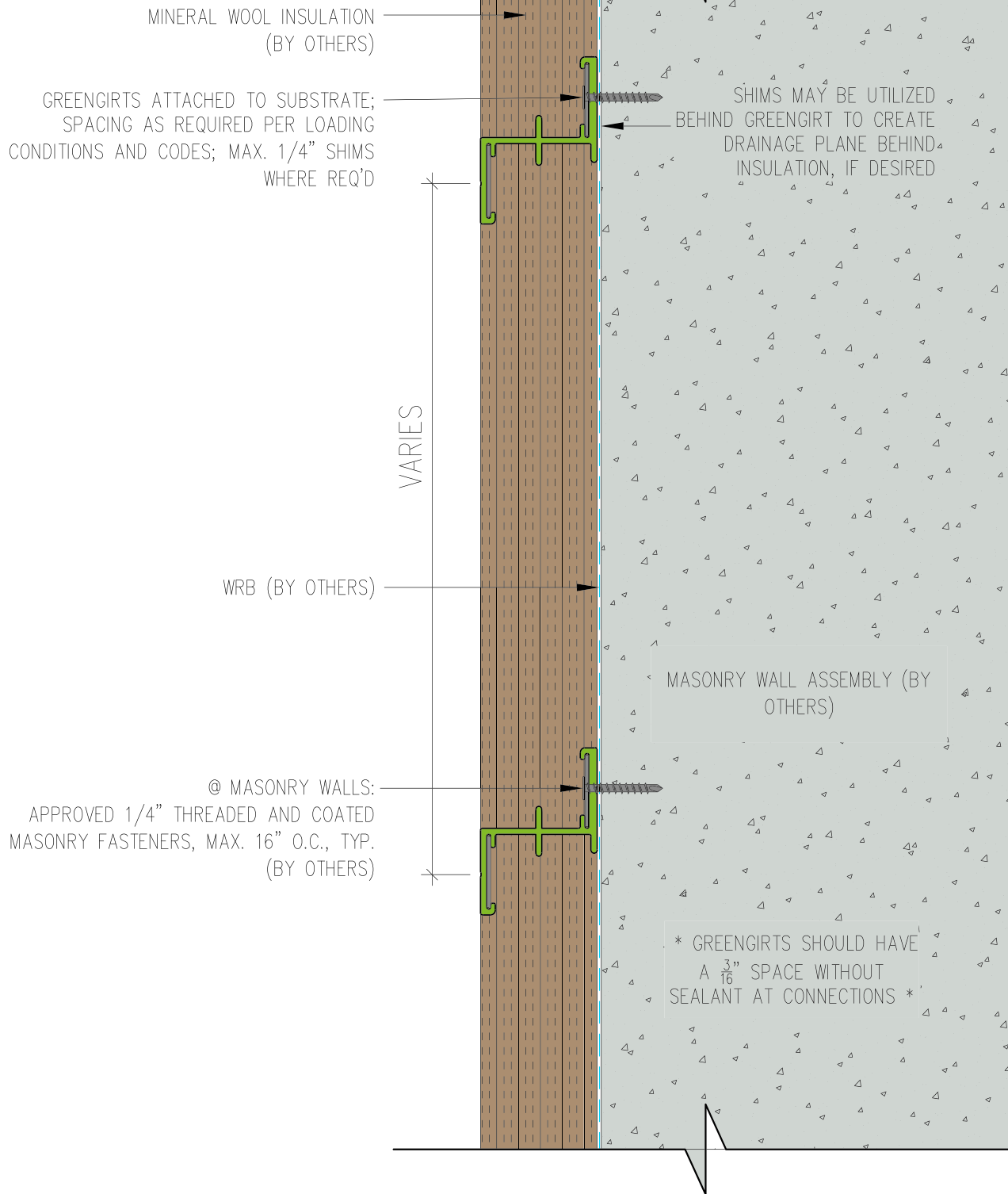
INSULATION: MINERAL WOOL

DATE:

GIRT ORIENTATION: HORIZONTAL

SOFFIT OUTSIDE DETAIL-2

NOT TO SCALE



GreenGirt Max CMH™

GreenGirt.com

(269) 355-1818

SUBSTRATE: MASONRY

CLADDING: —

GREENGIRT SIZE: 2"

INSULATION: MINERAL WOOL

DATE:

GIRT ORIENTATION: HORIZONTAL

WALL SECTION

NOT TO SCALE

GG1